



Dienst Justitiële Inrichtingen  
Ministerie van Justitie en Veiligheid



Reclassering Nederland



SVG verslavings  
reclassering GGZ

# Administrative Agreement Reintegration of (ex) detainees in the Netherlands

CEP - Europris  
Barcelona November 2019

*Marja Witteveen*  
*Arie Uysterlinde*



Dienst Justitiële Inrichtingen  
Ministerie van Justitie en Veiligheid



Reclassering Nederland



verslavings  
reclassering GGZ

# Administrative Agreement Reintegration

Signed on July 1st 2019 by

- Minister of Justice and Security
- Director Custodial Institutions Agency
- Director Probation Services
- Mayor on behalf of the association of the Dutch Municipalities

## Aim

For a successful reintegration of detainees, parties work together from the start of detention.



Dienst Justitiële Inrichtingen  
Ministerie van Justitie en Veiligheid



Reclassering Nederland



SVG verslavings  
reclassering GGZ

# To reduce recidivism A social task

## The Government Inter-administrative Program 2018

- Significant *social tasks*
- Preventing recidivism following detention
- Alliance between detention and municipalities
  - ✓ share information
  - ✓ continue care and guidance
  - ✓ regional enforcement of sanctions



Dienst Justitiële Inrichtingen  
Ministerie van Justitie en Veiligheid



Reclassering Nederland



SVG verslavings  
reclassering GGZ

# Ministry of Justice and Security

Program '*Course and Opportunities*'

A vision on the future sanctions

- Alliance Justice with the external (local/regional) world
- 'Safety nearby'



Dienst Justitiële Inrichtingen  
Ministerie van Justitie en Veiligheid



Reclassering Nederland



verslavings  
reclassering GGZ

# Custodial Institutions Agency Strategy

- Detainees are a social concern
- Detention: an interruption of social life or a part of?
- Reintegration process: networkpartners: probation service and municipalities

## Aim

Personalised reintegration-plan formulated, executed and monitored by different parties and detainee together.



Dienst Justitiële Inrichtingen  
Ministerie van Justitie en Veiligheid



Reclassering Nederland



SVG verslavings  
reclassering GGZ

# Mission Statement Probation Services 2020

- *Course of life is central starting point for approach and interventions*
- Sustainable and integral courses for the offenders
- Offenders take direction for their life goals and probation support them in reaching this



Dienst Justitiële Inrichtingen  
Ministerie van Justitie en Veiligheid



Reclassering Nederland



SVG verslavings  
reclassering GGZ

# Value of the administrative agreement for Probation Services

- Time spent in prison is a small period in the life course of citizens
- Ensure that there is a life '*before*' and '*after*' time spent in prison
- Use the available information that partners have to prevent detention damage



Dienst Justitiële Inrichtingen  
Ministerie van Justitie en Veiligheid



Reclassering Nederland



**SVG** verslavings  
reclassering GGZ

# Challenges

- Bringing the worlds of justice, public safety, (forensic)care-institutions together
- Solving privacy issues
- Mindset professionals





Dienst Justitiële Inrichtingen  
Ministerie van Justitie en Veiligheid



Reclassering Nederland



verslavings  
reclassering GGZ

# Municipalities Long term tasks

Tasks for municipalities in the *Social Domain*:

- Youth care and services
- People with difficulties entering job market
- People susceptible to radicalisation
- People (temporarily) displaying disordered behaviour

Major role for municipalities in preventing recidivism following detention.



Dienst Justitiële Inrichtingen  
Ministerie van Justitie en Veiligheid



Reclassering Nederland



verslavings  
reclassering GGZ

# Reducing recidivism detainees by successful reintegration

*Working together for a social task of reducing recidivism*

For a successful reintegration of detainees cooperation between prison, probation service and municipality

- To strengthen each other in their activities
- To continue care and guidance of detainees
- In the region to which the detainee returns

Administrative Agreement



Dienst Justitiële Inrichtingen  
Ministerie van Justitie en Veiligheid



Reclassering Nederland



verslavings  
reclassering GGZ

# Administrative Agreement

## *The appointments I*

*Parties involve each other in their activities*

- Advice about the sanction to the judge
- Prepare, implement, monitoring reintegrationplan
- Advice about the conditional release and aftercare



Dienst Justitiële Inrichtingen  
Ministerie van Justitie en Veiligheid



Reclassering Nederland



verslavings  
reclassering GGZ

# Administrative Agreement

## *The appointments II*

Determine together (with detainee) *at the start of detention* the reintegrationplan on basis of risks & needs (Scientific principle 'What Works')

- ✓ ID
- ✓ Housing
- ✓ Care
- ✓ Work & Income
- ✓ Paying Debts
- ✓ Social Network



Dienst Justitiële Inrichtingen  
Ministerie van Justitie en Veiligheid



Reclassering Nederland



verslavings  
reclassering GGZ

# Administrative Agreement

## *The appointments III*

- *Life course approach*: Continuation of projects launched before, during and after leaving detention.
- Attune to the course of reintegration route, *the allocation of tasks & responsibilities and control.*



Dienst Justitiële Inrichtingen  
Ministerie van Justitie en Veiligheid



Reclassering Nederland



SVG verslavings  
reclassering GGZ

# Administrative Agreement

## *The proces*

Workgroup under direction of the Ministry of Justice and Security (Association of Municipalities, Custodial Institutions Agency, Probation Service)

- Writes in company with field organizations the agreement and guide
- Prepares decision making and signing
- Supervises the implementation



Dienst Justitiële Inrichtingen  
Ministerie van Justitie en Veiligheid



Reclassering Nederland



verslavings  
reclassering GGZ

# What to do to implement?

- Storytelling: what will we do and why?
- To realise cooperation networkpartners (at every level) in the region around penal institutions
  - ✓ Administrative: *Organize management* (Directors Probation, Prison and college of mayor and aldermen in Municipalities)
  - ✓ Tactical: *Organize Cooperation* (Managers Prison, Probation and managers different domains in municipality)
  - ✓ Operational: *Perform the Process* (Casemanagers)



Dienst Justitiële Inrichtingen  
Ministerie van Justitie en Veiligheid



Reclassering Nederland



SVG verslavings  
reclassering GGZ

# Conditions

- Commitment
- Expertise
- Legal basis for data sharing
- Optimizing placement of detainees in the region of reintegration





Dienst Justitiële Inrichtingen  
Ministerie van Justitie en Veiligheid



Reclassering Nederland



verslavings  
reclassering GGZ

# The Administrative Agreement

It's tough job but it's a beautiful one!



# Facts and numbers in the Netherlands

17.395.226 current population

Every year, 36.278 new detainees are admitted

(total population; including juvenile prisoners and illegals)

On average, there are 11.139 in detention on any single day

Of these, 95% are men and 5% women

Adult inmates are detained for an average of 110 days

The rehabilitation of addiction care guides more than 20.000 clients every year

More than half of the clients of the probation service in 2018 are younger than 35 years

85% are men and 15% women

# Facts and numbers in the Netherlands

## Characteristics of the population detainees (survey 2018, WODC)

- In 75% we find (serious) antisocial behaviour
- 49% shows a serious criminal career
- 61% has problems facing housing and shelter at the end of the sentence
- 75% has financial problems
- 50% facing problems using alcohol and drugs
- 80% have social problems concerning relations and social network
- 45% show indications for lower mental capacities

# What about your country?

*a few questions...*

1. Is there a collaboration between the custodial institution, municipalities and probation service in your country regarding the reintegration during and after detention?
2. If so, are you positive about the collaboration?
3. Does your country see the reintegration of prisoners as a social task?
4. If so, is there attention for this subject at the administrative level?

**GREEN** is yes and **RED** is no



# The administrative agreement in practice

## “Starting together”

*Janneke Bredewolt*

*Monique Dijkstra*

*Margriet te Velde*

*Tamara Dol*

# Why starting together – The reason

- Custodial institution, probation service and municipalities → joint responsibility
- The cooperation was insufficient
- Interest of organization above cross-organization interest
- High risk that the prisoner will relapse into old behavior
- The administrative agreement combines with a local need for efficient collaboration resulted in the project: 'Starting together'



# Prison - the place where it comes together

- Co-operate with partners outside the prison
- The prison staff are more in contact with 'the outside world'
- Together with the partners and the inmate we make a plan
- Social workers coordinate the personal plan inside the prison

# Probation services - our responsibilities

- Involved during the entire criminal justice proces
- Advisory and executive role
- Specialist assess recidivism risk
- Working across paths/ connecting routes

# Role aftercare coördinator

- First point of contact for partners
- Organizes the multidisciplinary consultation in- and outside prison
- Responsible for the municipal tasks on the 6 basic conditions

- ✓ ID
- ✓ Housing
- ✓ Care
- ✓ Work & Income
- ✓ Paying Debts
- ✓ Social Network

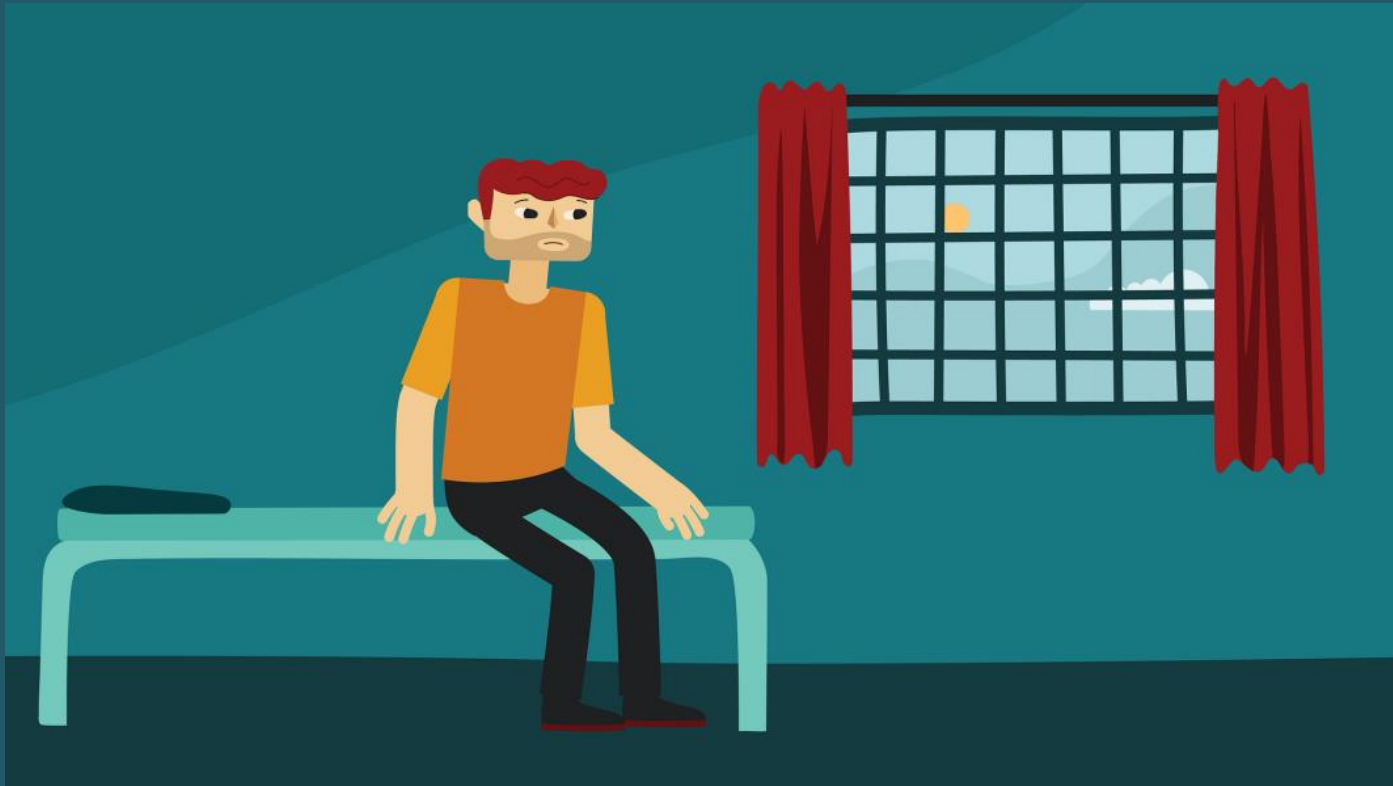
# Task municipality I

- Providing a valid ID
- Support in maintaining or finding suitable accommodation
- Municipalities make mutual agreements if a prisoner can't go back to the place of origin

## Task municipality II

- Facilitating the completion of training
- Starting the social assistance benefit on time
- Support in solving the dept problems
- Start support at home and assistance programs
- Support in maintaining or strengthening the social network

# What we do?



# Looking back – what did we saw

- Parties with each other around the table at the start of detention
- We work from equality
- Together we determine the route
- By intervening at the start, we prevent additional damage to the habitats
- With this method we want to reduce recidivism and nuisance within municipalities

*Thank you for letting us tell our story here*

*Gracias por dejarnos contar nuestra historia aquí*